

WRMC NEWSLETTER

Welcome to **2026** at White Rock Medical Center!
Here's what's ahead as we grow, evolve, and
strengthen our impact **together**.

Happy New Year, White Rock Team!

2026 IS OUR YEAR OF GROWTH AND IT STARTS WITH YOU.

As we step into 2026, we're entering an exciting new chapter at White Rock Medical Center. This year marks our shift from foundation-building to accelerated growth. We are expanding our impact, strengthening our teams, and continuing to show our community what exceptional care looks like.

Sustained Clinical Growth

BECAUSE OF YOUR DEDICATION AND
HARD WORK, 2025 DELIVERED
REMARKABLE RESULTS:



- ER visits reached approximately 1,600 per month
- EMS transports increased by 72%, exceeding 350 per month
- Inpatient census grew significantly, with ADC increasing from 15 to over 40
- ICU utilization expanded from 1-2 patients to 9-10 patients

This momentum reflects our community's trust in White Rock's ability to deliver high-acuity, high-quality care. In 2026, we will continue to scale this growth while maintaining the highest standards of quality, safety, and compliance.

2025 was an incredible year at White Rock Medical Center

PATIENT VISITS 2025: 24K

We had the privilege of caring for thousands of patients, made possible by the dedication, compassion, and commitment of our team.

Thank you to our amazing staff, providers, and physicians whose hard work and passion make White Rock Medical Center thrive.

AS WE ENTER 2026, WE LOOK FORWARD TO YOUR
CONTINUED SUPPORT AND WISH YOU A HAPPY
AND SUCCESSFUL NEW YEAR.



COMMUNITY PARTNERSHIPS

Our partnerships continue to strengthen our talent pipeline and community presence. Ongoing collaborations with South College, West Coast University, Woodrow Wilson High School, East Dallas Chamber of Commerce, and the Texas Hospital Association support our mission and long-term growth.

Investing in Our People

THIS YEAR, WE'RE
LAUNCHING NEW INITIATIVES
FOCUSED ON SUPPORTING
YOUR GROWTH, AMPLIFYING
YOUR VOICE, AND
STRENGTHENING OUR
CULTURE:



- HR Office Hours offered twice weekly for direct support
- Employee-Led Committees, including Employee Engagement and Community Outreach
- Recognition events and team-building opportunities
- Professional development through training, mentorship, and advancement pathways
- Continued commitment to transparent communication at all levels



WHITE ROCK
MEDICAL CENTER

What's Coming in 2026

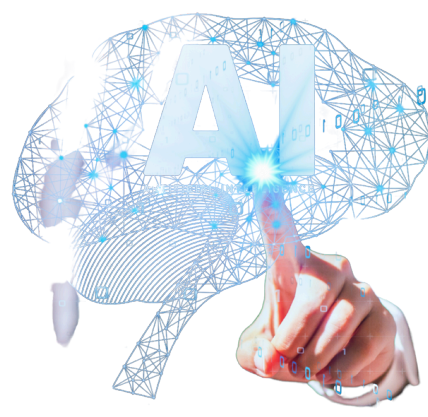
AI & Innovation Committee

LAUNCHING IN 2026

Interested in technology, AI, or innovation? We're launching a new AI and Innovation Committee in 2026 and are looking for team members who are curious, forward thinking, and excited about shaping the future of technology at White Rock.

This group will explore how AI and emerging tools can responsibly support patient care, improve workflows, and enhance efficiency across the organization. No prior experience required, just a willingness to learn and contribute.

[Scan the QR code to get involved or learn more.](#)



EMR Launch | 2026



This year, we will officially launch our new EMR system, Clinicomp. This system is designed to streamline workflows, improve communication across teams, and give you stronger tools to support patient care. Training and support will be provided throughout the transition to ensure everyone feels confident and supported every step of the way.

Our 2026 Framework

CARE • CONNECT • CULTIVATE



White Rock Cares

Delivering safe, high-quality, patient-centered care through evidence-based practices and shared accountability.

White Rock Connects

Strengthening communication across departments, leveraging technology, and building meaningful partnerships for seamless care delivery.

White Rock Cultivates

Fostering professional development, mentorship, and continuous improvement to build an empowered and engaged workforce.

The Path Forward

WHAT WE NEED FROM YOU

As we move forward together, we ask every team member to:

- Own your impact and take accountability for your role and patient experience
- Engage actively by joining committees, sharing ideas, and shaping our culture
- Lead where you stand by identifying challenges and driving solutions
- Adapt with purpose, especially during the EMR transition
- Communicate effectively and collaborate across departments
- Deliver excellence in quality, safety, and compliance
- Support one another — we succeed as one team



We are building an organization where strong people create high-performing teams, accountability drives excellence, and every individual has a voice in our direction.

Your dedication made 2025's growth possible. In 2026, we are investing in technology, services, and most importantly, your development and success. Leadership remains committed to transparent communication and creating a workplace where you can thrive and lead.

Let's make 2026 our strongest year yet.

— Team White Rock Medical Center

STAY
connected



WHITE ROCK MEDICAL CENTER

9440 POPPY DR. DALLAS, TX 75218 • 214-324-6100

MARKETING@WHITEROCKMEDICALCENTER.COM