

# WHITE ROCK MEDICAL CENTER

## CARE • CONNECT • CULTIVATE

● TECHNOLOGY ROADMAP 2026 ●

## NEW TECH TOOLS COMING THIS YEAR

We're rolling out new technology across the hospital to improve the care we deliver. From our new EMR to upgraded tools for scheduling, communications, and more, these changes give you better resources to do what you do best.



LAUNCHING THIS APRIL

The change we've been waiting for is almost here. CliniComp gives White Rock Medical Center a highly reliable, AI-enabled EMR that reduces downtime and ensures clinicians always have fast and consistent access to patient information. This unified platform strengthens clinical workflow, improves data accuracy, and accelerates our transition away from fragmented legacy systems - combining GoRev, Strategq, and TSystems into one, cohesive system. Although adjusted from our initially announced go-live date, we're happy to collaborate with CliniComp to launch the EMR in the first week of April, bringing White Rock Medical Center one step closer to our goal of becoming Dallas' leading tech-forward hospital.

## FULL 2026 ROADMAP

HERE'S EVERYTHING ELSE COMING THIS YEAR

The logo for Fabric Health, featuring the word 'fabric' in a white, lowercase, serif font on a dark blue rectangular background.

*fabric*

AVAILABLE NOW

Fabric Health gives White Rock Medical Center a fully configured virtual-care platform that expands access to on-demand clinical services, supporting 24/7 patient care without adding staffing burden. Through ED-Discharge SMS pathways and automated follow-up workflows, Fabric helps us re-engage patients after their visit, guide them safely back to us when needed, and improve care continuity. Its integration-ready design and reporting tools strengthen our digital front door, enhance patient experience, and create a scalable foundation for future telehealth growth. With this tool, our patients can screen their medical needs straight through our website; any time, anywhere, available today.



LAUNCHING SOON

Led by our own Dr. Junaid Kalia, RadioView.ai equips White Rock Medical Center with a modern, AI-powered imaging platform that speeds up radiology workflows and reduces reporting delays. Automated structured reporting and an intuitive web-based DICOM viewer help our radiologists produce more accurate results while handling higher imaging volumes. This directly improves turnaround times, enhances collaboration across sites, and supports faster clinical decision-making for our providers. Integrated with our EMR, our staff will be able to access their images quicker than ever, with additional AI insights to support their needs.



WHITE ROCK  
MEDICAL CENTER





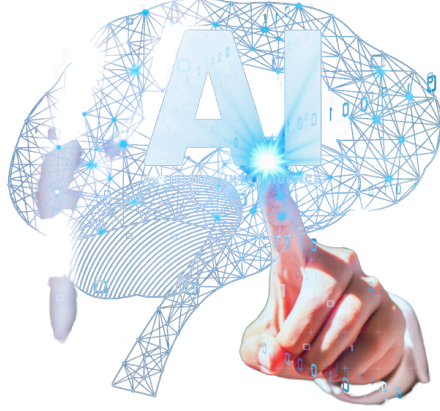
LAUNCHING THIS FEBRUARY

Persivia's CareSpace® platform centralizes White Rock Medical Center's clinical, claims, and population-health data into a single, actionable system. Its AI-driven insights help our care teams close gaps in care, improve quality metrics, and support value-based care initiatives. Plus, after consolidating past EMR data, Persivia will allow White Rock providers to directly tap into returning patient records without leaving their devices.



LAUNCHING THIS APRIL

Alongside our new EMR, MultiView gives White Rock Medical Center a unified, healthcare-focused Enterprise Resource Planning (ERP) tool that replaces fragmented finance tools and brings full visibility across accounting, materials management, budgeting, and intercompany activity. The platform can meet nearly all of our financial and operational needs in one system, reducing reconciliation issues and centralizing our data for cleaner reporting. Its roadmap supports our turnaround goals by strengthening financial controls and improving supply-chain accuracy, ensuring White Rock Medical Center enters the fiscal year with sharper accounting clarity and stronger operational resilience.



LAUNCHING EARLY Q2

SpinSci strengthens White Rock Medical Center's patient-access and engagement layer by integrating directly with CliniComp to automate outbound communications, including appointment reminders, follow-up calls, and patient-responsibility billing outreach. By leveraging EMR-driven data and syncing with our current phone system, SpinSci AI-supported backend reduces manual operational workload while ensuring patients receive timely, accurate, and personalized communication across their care journey. This partnership will be a key component in our strategy to modernize patient access and enhance financial performance.

## WE WANT YOUR HELP

Along with all that's coming to White Rock in the next few months, we want your input in making the decisions. We're launching our new **AI Committee** to make sure our frontline teams are directly involved in shaping how new technology is tested, evaluated, and rolled out. This committee gives our staff a meaningful voice from the very beginning — ensuring every tool we bring into the hospital actually supports your workflow, reduces burden, and improves patient care.

- ✓ TEST NEW AI TOOLS AND DIGITAL PRODUCTS BEFORE THEY GO LIVE
- ✓ PROVIDE HANDS-ON FEEDBACK TO IMPROVE DESIGN, SAFETY, AND USABILITY
- ✓ IDENTIFY WORKFLOW CHALLENGES WHERE AUTOMATION COULD HELP
- ✓ REPRESENT YOUR DEPARTMENT'S NEEDS DURING PILOT AND IMPLEMENTATION PHASES
- ✓ HELP EVALUATE PILOT RESULTS AND RECOMMEND WHAT SHOULD SCALE
- ✓ STRENGTHEN COLLABORATION BETWEEN CLINICAL, OPERATIONAL, AND IT TEAMS
- ✓ SHAPE HOSPITALWIDE AI GUIDELINES THAT PROTECT STAFF AND PATIENTS



**Take the next step — sign up now to join the WRMC AI Committee by filling out [this form](#) or scanning the QR code, and help lead our innovation efforts.** Our first meeting will be held the first week of February, so be sure to sign up to stay up to date.

STAY  
*connected*



WHITE ROCK MEDICAL CENTER

9440 POPPY DR. DALLAS, TX 75218 • 214-324-6100

MARKETING@WHITEROCKMEDICALCENTER.COM